

Technical Data Sheet

Compressor model **HUY70MAb**
 Voltage **220-240V 50Hz ~1**
 Refrigerant **R600a**

APPLICATION

COMPRESSOR

MOTOR

Application	High-Medium Back Pressure	Displacement	6,70 cm ³	Nominal Power	1/8 hp
Refrigerant	R600a	Diameter	21,99 mm	Voltage/Frequency	220-240V 50Hz
Evaporating Temp.	-25,0 °C to 10,0 °C	Stroke	17,50 mm	Voltage range	187-255 V
Expansion	Capillar	Net Weight	9,01 Kg	Type	RSCR
Comp. Cooling	Static	Oil type	ISO VG 10 MINER	Phase number	1 PH
Max. ambient temp.	43,0 °C	Oil charge	200 cm ³	Locked Rotor Amps (LRA)	5,40 A
				Max. Cont. Current (MCC)	1,10 A
				Main W. resist. at 25°C	21,55 Ω
				Start W. resist. at 25°C	17,50 Ω

NOMINAL PERFORMANCE

APPROVALS

	ASHRAE	CECOMAF
Cooling Capacity	345 kCal/h	338 W
COP	2,99 W/W	2,59 W/W
EER	2,57 kCal/Wh	2,24 kCal/Wh
Input Power	134 W	130 W
Current	0,72 A	0,71 A

TEST CYCLE CONDITIONS

	ASHRAE HMBP (D)	CECOMAF HMBP (C)
Evaporating temp. (T _e)	7,2 °C	5,0 °C
Condensing temp. (T _c)	55,0 °C	55,0 °C
Liquid temp. (T _{liq.})	46,0 °C	55,0 °C
Ambient temp. (T _{amb.})	35,0 °C	32,0 °C
Suction temp. (T _{suction})	35,0 °C	32,0 °C
Voltage/Frequency	220 V 50 Hz	220 V 50 Hz

ELECTRICAL COMPONENTS

Run capacitor	3 μF 400 V			
Relay	Option 1			
Reference	PTC K100			
Voltage	200-240 V			
Resistance	14.00 Ω			
Protector	Option 1	Option 2		
Reference	AE37FJ	B59-115		
Current	5,90 A	5,90 A		
Time check	7,5-14 seg	7,5-14 seg		
Disc temp. (Open/Close)	115,00 / 62,00 °C	115,00 / 62,00 °C		

This product is approved for R290 and R600a regarding explosion safety according to standard EN 60335-1 and EN 60335-2-34

ASHRAE

Tc °C	Te °C	Cooling Capacity kCal/h	Consumption W	Current A	COP W/W	EER kCal/Wh
40	-25	78	68	0,48	1,33	1,15
40	-20	104	75	0,50	1,63	1,40
40	-15	137	81	0,52	1,96	1,69
40	-10	177	88	0,55	2,34	2,01
40	-5	223	95	0,57	2,73	2,35
40	0	277	102	0,60	3,14	2,70
40	5	336	110	0,63	3,57	3,07
40	7,2	365	113	0,64	3,76	3,23
40	10	403	117	0,65	4,00	3,44

45	-25	77	69	0,48	1,29	1,11
45	-20	102	77	0,51	1,55	1,33
45	-15	134	84	0,53	1,85	1,59
45	-10	173	92	0,56	2,19	1,88
45	-5	219	100	0,59	2,55	2,19
45	0	271	108	0,62	2,92	2,51
45	5	330	116	0,65	3,30	2,84
45	7,2	358	120	0,67	3,47	2,99
45	10	396	125	0,68	3,69	3,17

50	-25	76	71	0,49	1,25	1,08
50	-20	100	79	0,51	1,48	1,27
50	-15	132	87	0,54	1,75	1,51
50	-10	170	96	0,58	2,05	1,77
50	-5	214	105	0,61	2,38	2,04
50	0	266	114	0,64	2,72	2,34
50	5	324	123	0,68	3,06	2,64
50	7,2	352	127	0,69	3,22	2,77
50	10	389	132	0,71	3,42	2,94

55	-25	75	72	0,49	1,21	1,04
55	-20	99	81	0,52	1,41	1,21
55	-15	129	90	0,56	1,66	1,42
55	-10	166	100	0,59	1,93	1,66
55	-5	210	110	0,63	2,22	1,91
55	0	260	120	0,66	2,53	2,18
55	5	318	130	0,70	2,85	2,45
55	7,2	345	134	0,72	2,99	2,57
55	10	382	140	0,74	3,18	2,73

60	-25	74	73	0,49	1,17	1,01
60	-20	97	83	0,53	1,35	1,16
60	-15	126	94	0,57	1,57	1,35
60	-10	162	104	0,60	1,82	1,56
60	-5	205	115	0,64	2,08	1,79
60	0	255	125	0,69	2,37	2,04
60	5	311	136	0,73	2,66	2,29
60	7,2	338	141	0,75	2,79	2,40
60	10	375	147	0,77	2,96	2,54

CECOMAF

Tc °C	Te °C	Cooling Capacity W	Consumption W	Current A	COP W/W	EER kCal/Wh
40	-25	84	68	0,48	1,23	1,06
40	-20	113	75	0,50	1,51	1,30
40	-15	149	82	0,52	1,82	1,57
40	-10	192	89	0,55	2,16	1,87
40	-5	242	96	0,57	2,53	2,18
40	0	299	103	0,60	2,91	2,51
40	5	363	110	0,63	3,29	2,85
40	7,2	394	114	0,64	3,47	3,00
40	10	435	118	0,66	3,69	3,19

45	-25	83	70	0,48	1,19	1,03
45	-20	110	77	0,51	1,43	1,23
45	-15	145	85	0,53	1,71	1,48
45	-10	187	93	0,56	2,02	1,74
45	-5	236	101	0,59	2,34	2,02
45	0	292	109	0,62	2,68	2,32
45	5	355	117	0,65	3,03	2,62
45	7,2	385	121	0,67	3,19	2,76
45	10	425	125	0,69	3,39	2,93

50	-25	81	71	0,49	1,14	0,99
50	-20	108	79	0,52	1,36	1,17
50	-15	141	88	0,55	1,61	1,39
50	-10	182	97	0,58	1,88	1,63
50	-5	229	105	0,61	2,18	1,88
50	0	284	114	0,64	2,48	2,15
50	5	346	124	0,68	2,80	2,42
50	7,2	376	128	0,70	2,94	2,54
50	10	416	133	0,72	3,12	2,70

55	-25	80	72	0,49	1,10	0,95
55	-20	105	82	0,52	1,29	1,11
55	-15	137	91	0,56	1,51	1,30
55	-10	177	101	0,59	1,76	1,52
55	-5	223	110	0,63	2,02	1,75
55	0	277	120	0,67	2,30	1,99
55	5	338	130	0,71	2,59	2,24
55	7,2	367	135	0,72	2,72	2,35
55	10	406	141	0,75	2,89	2,49

60	-25	78	74	0,50	1,06	0,92
60	-20	102	84	0,53	1,22	1,05
60	-15	133	94	0,57	1,42	1,22
60	-10	172	105	0,61	1,64	1,42
60	-5	217	115	0,65	1,88	1,63
60	0	270	126	0,69	2,14	1,85
60	5	329	137	0,73	2,40	2,08
60	7,2	358	142	0,75	2,52	2,18
60	10	396	148	0,78	2,67	2,31

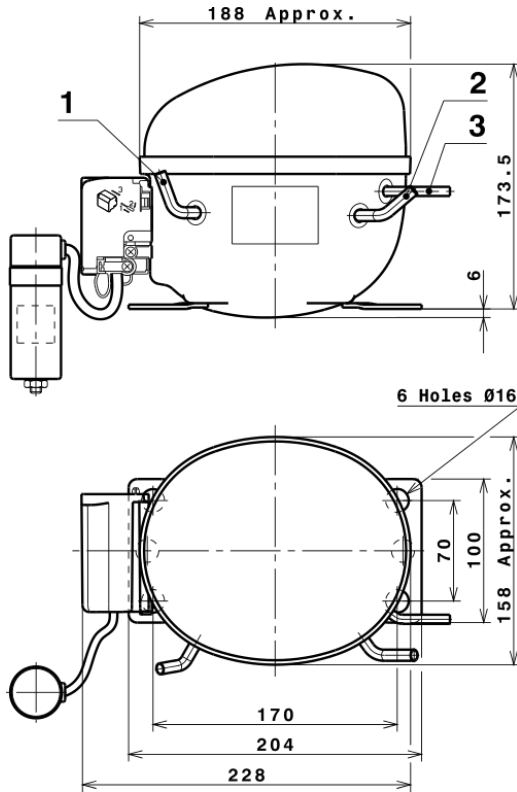
EN12900

X	Cooling Capacity (W)	Consumption (W)	Current (A)	Mass Flow (kg/h)
1	358,6280060968	58,0630325602	0,4248249314	2,882135832104
2	13,9953919666	0,0664757634	-0,0000218969	0,1361069481715
3	-1,6461399601	1,1814950483	0,0045887106	0,017295779056937
4	0,1392141283	0,0039560072	0,0000308354	0,0020910019711639
5	-0,0523227685	0,0363065660	0,0001456874	0,00047461465596006

Equation	$x_1 + x_2Te + x_3Tc + x_4Te^2 + x_5TeTc$
----------	---

Technical Data Sheet

COMPRESSOR DIMENSIONS

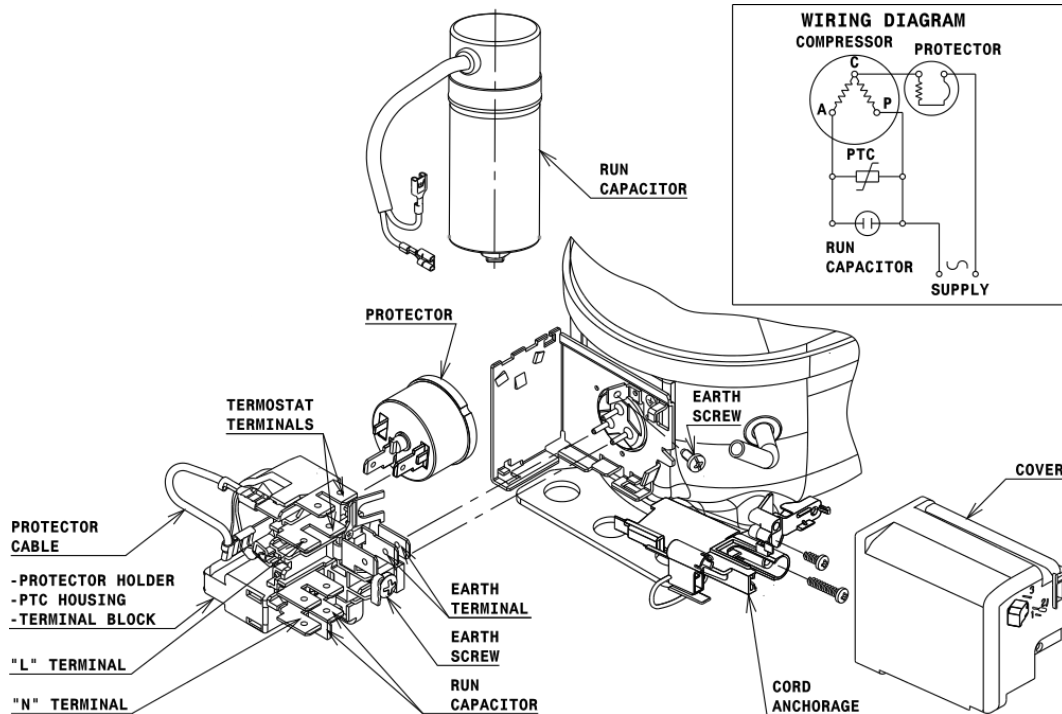


DESIGNATION INTERNAL DIAM.

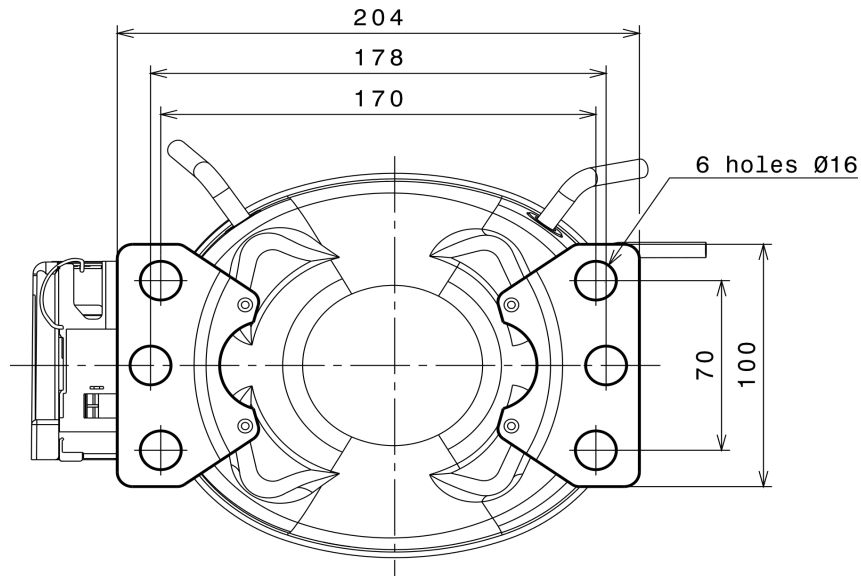
DESIGNATION	INTERNAL DIAM.
1 Service	6,2 mm
2 Suction	6,2 mm
3 Discharge	4,9 mm

WIRING DIAGRAMS AND ELECTRICAL ASSEMBLY

RSCR CONNECTION (U range)



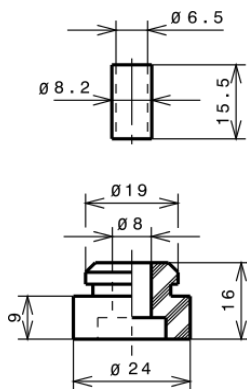
FIXINGS



SILENT BLOCKS (MOUNTING ACCESSORIES)

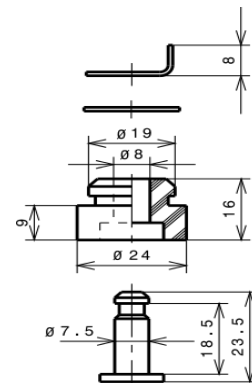
STANDARD

Ø16 holes (170x70 net)



SNAP-ON

Ø16 holes (170x70 net)



SOA

SOA R600a HMBP

