

Technical Data Sheet

Compressor model **HPY12AGb**
 Voltage **200-220/220-230V 50/60Hz ~1**
 Refrigerant **R600a**

APPLICATION		COMPRESSOR		MOTOR	
Application	Low Back Pressure	Displacement	12,10 cm ³	Nominal Power	1/4 hp
Refrigerant	R600a	Diameter	27,00 mm	Voltage/Frequency	200-220V 50Hz
Evaporating Temp.	-35,0 °C to -10,0 °C	Stroke	21,13 mm	Voltage range	170-242 V
Expansion	Capillar	Net Weight	11,01 Kg	Type	RSCR
Comp. Cooling	Static	Oil type	ISO VG 10 MINER	Phase number	1 PH
Max. ambient temp.	43,0 °C	Oil charge	300 cm ³	Locked Rotor Amps (LRA)	13,50 A
				Max. Cont. Current (MCC)	1,30 A
				Main W. resist. at 25°C	11,32 Ω
				Start W. resist. at 25°C	10,30 Ω

NOMINAL PERFORMANCE

	ASHRAE	CECOMAF
Cooling Capacity	165 kCal/h	144 W
COP	1,48 W/W	1,16 W/W
EER	1,27 kCal/Wh	1,00 kCal/Wh
Input Power	130 W	124 W
Current	0,83 A	0,80 A

APPROVALS

TEST CYCLE CONDITIONS

	ASHRAE LBP (B)	CECOMAF LBP (A)
Evaporating temp. (T _e)	-23,3 °C	-25,0 °C
Condensing temp. (T _c)	55,0 °C	55,0 °C
Liquid temp. (T _{liq.})	32,0 °C	55,0 °C
Ambient temp. (T _{amb.})	32,0 °C	32,0 °C
Suction temp. (T _{suction})	32,0 °C	32,0 °C
Voltage/Frequency	200 V 50 Hz	200 V 50 Hz

ELECTRICAL COMPONENTS

Run capacitor	4 µF 400 V		
Relay	Option 1		
Reference	PTC K100		
Voltage	200-240 V		
Resistance	14.00 Ω		
Protector	Option 1	Option 2	Option 3
Reference	MSP348LZ	4TM276NFBYY	T0502
Current	7,40 A	9,00 A	9,00 A
Time check	7,5-14 seg	5-15 seg	7,5-14 seg
Disc temp. (Open/Close)	120,00 / 61,00 °C	120,00 / 61,00 °C	130,00 / 62,00 °C

This product is approved for R290 and R600a regarding explosion safety according to standard EN 60335-1 and EN 60335-2-34

ASHRAE

Tc °C	Te °C	Cooling Capacity kCal/h	Consumption W	Current A	COP W/W	EER kCal/Wh
40	-35	100	93	0,66	1,25	1,08
40	-30	134	105	0,72	1,48	1,27
40	-25	175	119	0,78	1,72	1,48
40	-23,3	191	124	0,80	1,80	1,55
40	-20	225	134	0,85	1,96	1,68
40	-15	284	151	0,92	2,18	1,88
40	-10	350	170	1,00	2,39	2,06

45	-35	94	92	0,66	1,18	1,02
45	-30	126	105	0,72	1,39	1,20
45	-25	167	120	0,79	1,61	1,39
45	-23,3	183	126	0,81	1,69	1,45
45	-20	216	137	0,86	1,83	1,58
45	-15	273	155	0,94	2,04	1,76
45	-10	338	175	1,02	2,24	1,93

50	-35	88	92	0,65	1,12	0,96
50	-30	119	106	0,72	1,31	1,12
50	-25	159	122	0,79	1,51	1,30
50	-23,3	174	128	0,82	1,58	1,36
50	-20	206	140	0,87	1,71	1,47
50	-15	262	159	0,95	1,91	1,64
50	-10	326	181	1,04	2,10	1,80

55	-35	82	91	0,65	1,05	0,90
55	-30	112	106	0,72	1,22	1,05
55	-25	150	124	0,80	1,41	1,21
55	-23,3	165	130	0,83	1,48	1,27
55	-20	197	143	0,89	1,60	1,38
55	-15	251	163	0,97	1,79	1,54
55	-10	314	186	1,06	1,96	1,69

60	-35	76	90	0,65	0,98	0,84
60	-30	105	107	0,73	1,14	0,98
60	-25	142	125	0,81	1,31	1,13
60	-23,3	156	132	0,84	1,37	1,18
60	-20	187	146	0,90	1,49	1,28
60	-15	240	168	0,99	1,67	1,43
60	-10	302	191	1,08	1,84	1,58

CECOMAF

Tc °C	Te °C	Cooling Capacity W	Consumption W	Current A	COP W/W	EER kCal/Wh
40	-35	109	93	0,66	1,18	1,02
40	-30	148	105	0,72	1,41	1,22
40	-25	195	119	0,78	1,65	1,42
40	-23,3	213	124	0,80	1,72	1,49
40	-20	250	134	0,85	1,86	1,61
40	-15	312	151	0,92	2,07	1,79
40	-10	383	170	1,00	2,25	1,94

45	-35	99	92	0,66	1,07	0,93
45	-30	135	105	0,72	1,28	1,10
45	-25	178	120	0,79	1,48	1,28
45	-23,3	195	126	0,81	1,55	1,34
45	-20	229	137	0,86	1,67	1,45
45	-15	288	155	0,94	1,86	1,60
45	-10	355	175	1,02	2,03	1,75

50	-35	89	92	0,65	0,97	0,84
50	-30	121	106	0,72	1,14	0,99
50	-25	161	122	0,79	1,32	1,14
50	-23,3	176	128	0,82	1,38	1,19
50	-20	209	140	0,87	1,49	1,29
50	-15	264	159	0,95	1,66	1,43
50	-10	328	181	1,04	1,81	1,57

55	-35	79	91	0,65	0,86	0,75
55	-30	107	106	0,72	1,01	0,87
55	-25	144	124	0,80	1,16	1,00
55	-23,3	158	130	0,83	1,22	1,05
55	-20	188	143	0,89	1,32	1,14
55	-15	240	163	0,97	1,47	1,27
55	-10	301	186	1,06	1,62	1,40

60	-35	68	90	0,65	0,76	0,65
60	-30	94	107	0,73	0,88	0,76
60	-25	127	125	0,81	1,01	0,87
60	-23,3	140	132	0,84	1,06	0,91
60	-20	168	146	0,90	1,15	0,99
60	-15	217	168	0,99	1,29	1,12
60	-10	273	191	1,08	1,43	1,23

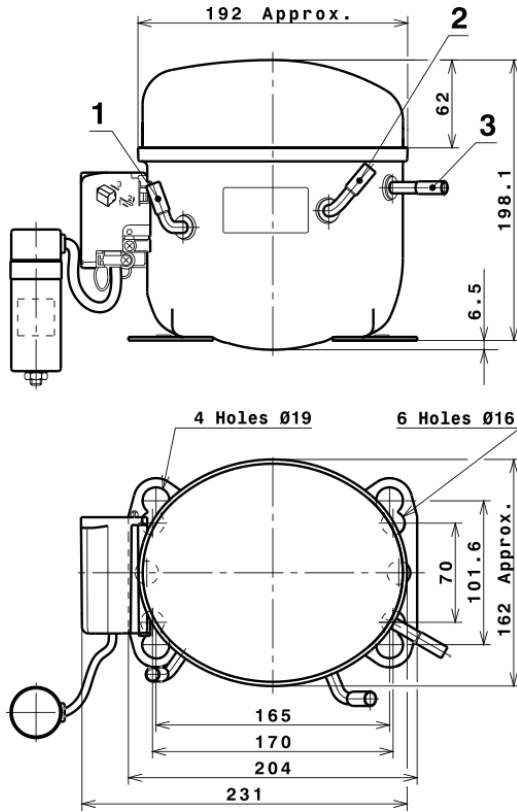
EN12900

X	Cooling Capacity (W)	Consumption (W)	Current (A)	Mass Flow (kg/h)
1	810,9189674710	154,7799396824	0,9314823701	8,1944880536462
2	23,0966246402	2,8203232620	0,0094252560	0,25650888571689
3	-6,9297102303	1,5813688779	0,0061400948	-0,037839949912592
4	0,1519368674	0,0361961842	0,0000763553	0,0022084603565255
5	-0,1394503777	0,0490719031	0,0001940740	-0,00063588096500096

Equation	$x_1 + x_2Te + x_3Tc + x_4Te^2 + x_5TeTc$
----------	---

Technical Data Sheet

COMPRESSOR DIMENSIONS

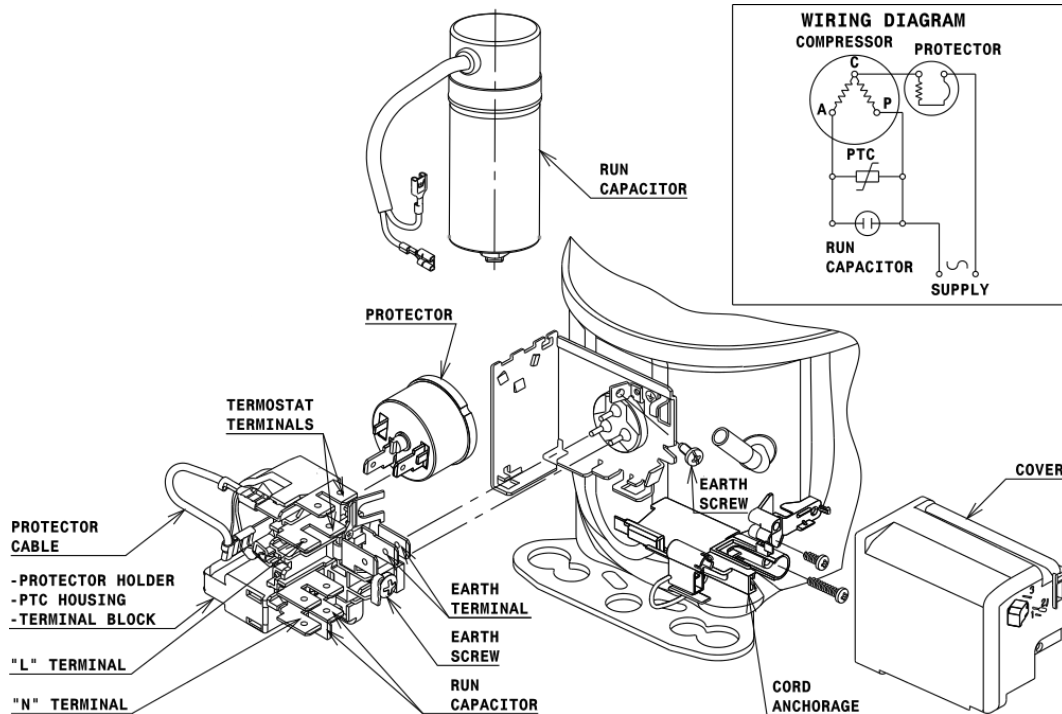


DESIGNATION INTERNAL DIAM.

DESIGNATION	INTERNAL DIAM.
1 Suction	8,1 mm
2 Service	8,1 mm
3 Discharge	6,5 mm

WIRING DIAGRAMS AND ELECTRICAL ASSEMBLY

RSCR CONNECTION (L, P ranges)



Technical Data Sheet

FIXINGS



SILENT BLOCKS (MOUNTING ACCESSORIES)

STANDARD

$\varnothing 16$ holes (170x70 net)



AMERICAN FEET

$\varnothing 19$ holes (165x101.6 net)



SNAP-ON

$\varnothing 16$ holes (170x70 net)



SOA

SOA R600a LBP

