

DLE6.5CN Energy-optimized LBP/MBP Compressor R290 115-127V 60Hz

General

Code number (pre-assembled CSIR start equipment)	102H3793
Approvals	UL984
Compressors on pallet	80

Application

Application	LBP/MBP			
	Hz	50	60	
Frequency	Hz	50	60	
Evaporating temperature	°F	-	-31 to 45	
Voltage range	V	-	95 - 135	
Max. condensing temperature continuous (short)	°F	-	149 (149)	
Max. winding temperature continuous (short)	°F	-	257 (275)	

Cooling requirements

Frequency	Hz	50			60		
		LBP	MBP	HBP	LBP	MBP	HBP
90°F		-	-	-	F ₂	F ₂	-
100°F		-	-	-	F ₂	F ₂	-
110°F		-	-	-	F ₂	F ₂	-
Remarks on application:							

Motor

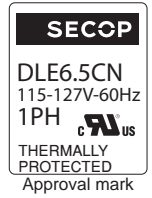
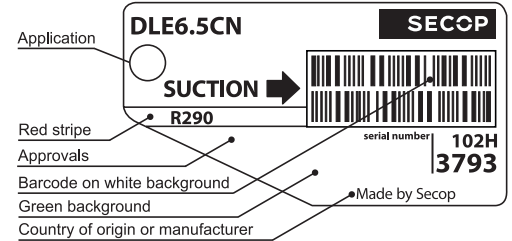
Motor type	CSIR		
LRA (rated after 4 sec. UL984), HST LST	A	22.8	-
Cut in Current, HST LST	A	22.8	-
Resistance, main start winding (77°F)	Ω	2.5	5.0

Design

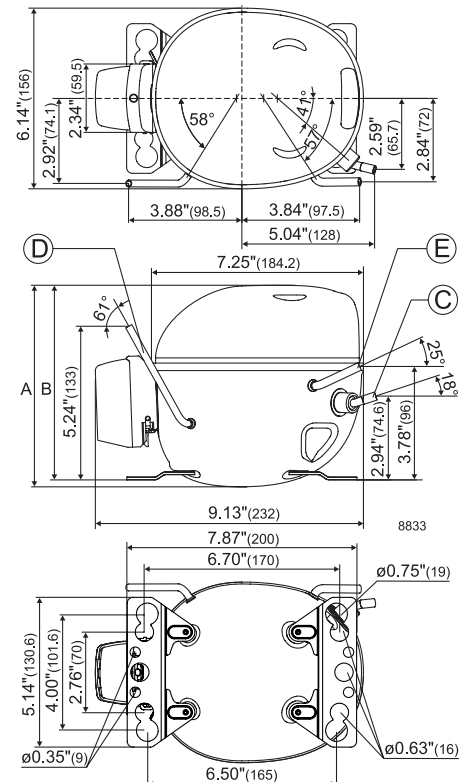
Displacement	cu.in	0.40
Oil quantity (type)	fl.oz.	7.8 (polyolester)
Maximum refrigerant charge	oz.	5.3
Free gas volume in compressor	fl.oz.	44.8
Weight without electrical equipment	lbs.	18.7

Dimensions

Height	inch	A	6.90
		B	6.64
		B1	-
		B2	-
Suction connector	location, I.D. in. angle	C	0.320-0.327 18°
		material comment	Copper Rubber plug
Process connector	location, I.D. in. angle	D	0.252-0.259 60°
		material comment	Copper Rubber plug
Discharge connector	location, I.D. in. angle	E	0.252-0.259 25°
		material comment	Copper Rubber plug
Oil cooler connector	location, I.D. in. angle	F	-
		material comment	-
Remarks:			



- S = Static cooling normally sufficient
- O = Oil cooling
- F₁ = Fan cooling 1.5 m/s (compressor compartment temperature equal to ambient temperature)
- F₂ = Fan cooling 3.0 m/s necessary
- SG = Suction gas cooling normally sufficient
- = not applicable in this area



ASHRAE LBP

115V, 60Hz, fan cooling F₂

Evap. temp. in °F	-49	-40	-30	-20	-13	-10	0	10	14	20	30	32	40	41	45	50	59
Capacity in BTU/h			722	984	1188	1282	1631	2048	2238	2551	3156	3291	3881	3961	4294		
Power cons. in W			191	221	242	251	281	311	323	341	372	378	403	406	419		
Current cons. in A			2.83	2.97	3.09	3.14	3.33	3.55	3.63	3.77	4.02	4.07	4.27	4.30	4.40		
EER in BTU/Wh			3.78	4.46	4.91	5.11	5.81	6.59	6.92	7.47	8.48	8.7	9.63	9.75	10.3		

ASHRAE MBP/HBP

115V, 60Hz, fan cooling F₂

Evap. temp. in °F	-49	-40	-30	-20	-13	-10	0	10	14	20	30	32	40	41	45	50	59
Capacity in BTU/h			645	880	1061	1145	1456	1827	1996	2274	2810	2930	3452	3522	3817		
Power cons. in W			189	219	239	248	278	308	320	338	368	374	398	401	413		
Current cons. in A			2.83	2.97	3.09	3.14	3.33	3.55	3.63	3.77	4.02	4.07	4.27	4.30	4.40		
EER in BTU/Wh			3.41	4.02	4.43	4.61	5.24	5.94	6.24	6.73	7.64	7.84	8.67	8.78	9.23		

EN 12900 LBP

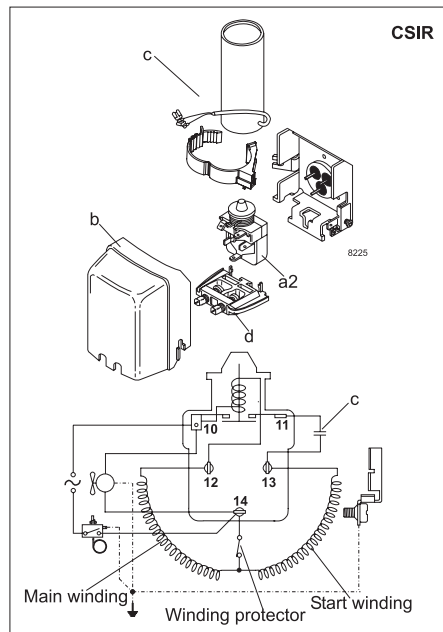
115V, 60Hz, fan cooling F₂

Evap. temp. in °F	-49	-40	-30	-20	-13	-10	0	10	14	20	30	32	40	41	45	50	59
Capacity in W			223	295	353	380	479	598	651	740	909	946	1109	1131	1222		
Power cons. in W			195	220	236	243	267	291	300	314	337	342	361	363	373		
Current cons. in A			2.81	2.92	3.00	3.04	3.18	3.33	3.39	3.49	3.65	3.69	3.82	3.84	3.91		
COP in W/W			1.14	1.35	1.49	1.56	1.79	2.06	2.17	2.35	2.69	2.77	3.07	3.11	3.28		

EN 12900 MBP

115V, 60Hz, fan cooling F₂

Evap. temp. in °F	-49	-40	-30	-20	-13	-10	0	10	14	20	30	32	40	41	45	50	59
Capacity in W			204	272	325	350	443	553	604	686	844	879	1033	1053	1139		
Power cons. in W			198	224	243	251	277	303	313	329	356	361	382	385	396		
Current cons. in A			2.82	2.94	3.03	3.08	3.23	3.40	3.47	3.58	3.76	3.8	3.96	3.98	4.06		
COP in W/W			1.03	1.21	1.34	1.40	1.60	1.83	1.93	2.08	2.37	2.44	2.70	2.73	2.88		



Accessories for	DLE6.5CN	Figure	Code number
Starting relay	1/4 in. spade connectors	a2	117U7013
Start. capacitor 240 µF	1/4 in. spade connectors	c	117U5023
Cover		b	103N0492
Cord relief		d	103N1010

Test conditions	EN 12900		ASHRAE	
	LBP	MBP	LBP	MBP
Condensing temperature	104°F	113°F	130°F	130°F
Ambient temperature	90°F	90°F	90°F	90°F
Suction gas temperature	68°F	68°F	90°F	95°F
Liquid temperature	no subcooling		90°F	115°F

Mounting accessories	Code number
Bolt joint for one comp. Ø: 3/4 in.	118-1949
Bolt joint for one comp. Ø: 5/8 in.	118-1946
Snap-on for one comp. Ø: 5/8 in.	118-1947

Nidec GA Compressors accepts no responsibility for possible errors in catalogs, brochures, and other printed material. Nidec GA Compressors reserves the right to alter its products without notice. This also applies to products already on order provided that such alterations can be made without substantial changes being necessary to specifications already agreed. All trademarks in this material are the property of the respective companies. Secop and the Secop logotype are trademarks of Nidec Global Appliance Germany GmbH. All rights reserved. www.secop.com